



# Attention Civil Engineers, Industry leaders now teach you success.



If you are a student of Civil Engineering, you have to grab this opportunity, as it is meant exclusively for you! Why? Because you'll be a part of the ACCE (Association of Consulting Civil Engineers) – a prestigious gathering of engineers from across the country. And guess what, this is open only to you - a student of CADD Centre.

CADD Centre in association with ACCE presents its students with a unique opportunity. As a current student of CADD Centre, you are entitled to privileges at affordable costs such as:

- ◆ A unique membership number and an ID card which will be valid until you complete your engineering degree.
- ◆ Information regarding the monthly meetings of ACCE passed on to you by the local centre.
- ◆ You will be allowed to participate in ACCE meetings with the professionals from the industry.
- ◆ Summer training programs, placement and project support will be provided during your final year.
- ◆ Participation in all seminars, conference and workshops conducted by ACCE.

Avails special offers on student membership

For registration please visit [www.caddcentre.ws/acce.php](http://www.caddcentre.ws/acce.php)



Book Post

If undelivered, please return to:



## Presenting, a scholarship that will change your life!

Cash award of **₹25,000** for test toppers\*

Avail Scholarships up to **50%**



### Region

Assam, Bihar, Chhattisgarh, Jharkhand, Kerala, Madhya Pradesh, Meghalaya, Odisha & West Bengal

Test dates: 11, 12 & 18, 19th January 2014

Contact your nearest centre for more details or visit [www.caddcentre.ws](http://www.caddcentre.ws)

Please send your feedback to the Editor - Ms. P. Malarvizhi, Manager - International Business & Corporate Communications, CCTS at [p.malarvizhi@caddcentre.ws](mailto:p.malarvizhi@caddcentre.ws)  
Graphic Designer - R. Rajakumar, Senior Graphic Designer ■ CADD Centre and CADD Centre logo are registered trademarks of CADD Centre Training Services Pvt Limited. ■ All the above mentioned brand names and trademarks belong to respective owners & acknowledged. ■ CADD ZOOM is an internal monthly newsletter of CADD Centre Training Services. For free circulation to its employees & customers!  
Corporate Office: #91, Dr. Radhakrishnan Salai, Gee Gee Crystal, 8th Floor, Mylapore, Chennai - 600 004. Ph: (91 44) 4596 6100.



VOLUME - 9  
ISSUE - 10  
JANUARY 2014

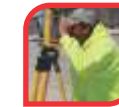


# CADDZOOM

MONTHLY NEWSLETTER

your CAD / CAM highway

### IN THIS ISSUE



PAGE 2  
Building Estimation & Costing  
COURSE AT CADD CENTRE



PAGE 3  
CADD CENTRE LAUNCHES  
COMPETENCY CERTIFICATION  
PROGRAMS...



PAGE 4  
CADD CENTRE ANNOUNCES  
CADD QUEST 2014

# QUANTITY SURVEYING

- an overview



Surveyors work in a variety of different settings including people's homes, the sea bed, roads and motorways, collectables and large construction sites. They are also responsible for the protection of the environment in which they are working.

Quantity surveying is primarily centered on construction and management of costs and budgets of large projects. From the moment a plan is drawn until a large construction project has been completed, a quantity surveyor is likely to be involved in a legal, technical and financial capacity. The functions of a quantity surveyor are broadly concerned with the control of the cost on construction projects, the management and maintenance of the budget, valuations and

any legal matters arising through the course of the project. They are required to make sure that the project remains profitable and efficient.

### The Role of the Quantity Surveyor:

A Quantity Surveyor is a construction industry professional who specializes in estimating the value of construction works and can also be referred to as a "Cost Engineer" or "Cost Planner". The term quantity surveyor derives from the role taken in quantifying the various resources that it takes to construct a given project, such as labour, supervision, plant and materials.

Quantity Surveyors use their skills to determine the cost of building work ranging

from small refurbishment works through to assessing the construction value of new multi-million dollar road projects. They are employed on a wide variety of projects covering all aspects of construction such as building, civil, mining, sea defense, retail and infrastructure projects to determine the cost of such facilities.

Quantity Surveyors are involved at various stages of the construction process, typically prior to construction, during construction and following completion of the works. Quantity Surveyors work with accountants, architects, engineers, builders, building owners, developers, financiers, government, insurance underwriters, loss adjusters, solicitors and subcontractors. The detailed

## CADD CENTRE WISHES YOU HAPPY NEY YEAR!







## Quantity Takeoff

### Building Estimation & Costing course at CADD Centre



Every building has its price. Accurately forecasting the cost of future projects is an important skill for civil engineers and cost estimators. As the demand for cost estimators has increased over the years, CADD Centre has introduced an exclusive course on Building Estimation & Costing.

The course is based on Autodesk's Quantity Takeoff, a software solution that helps engineers perform a takeoff on an entire building information model in just minutes - as opposed to days using traditional methods. The software provides greater flexibility than typical databases or spreadsheets, enabling a smoother, more accurate work-flow for cost estimators.

The Building Estimation and Costing course can help engineers and estimators make material costing faster, easier, and more accurate. The course is useful for civil engineering and architectural students and professionals.

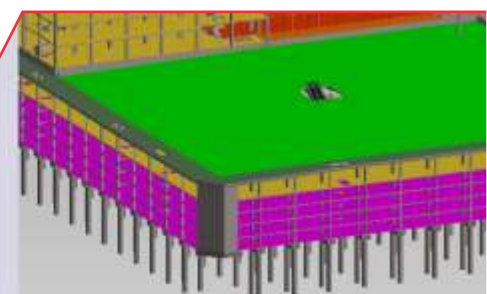
Upon completion of the course, students can take advantage of digital property data to automatically or manually measure areas and count or price building components such as walls, doors, and window. They can create detailed materials report much faster than paper-based processes. They can also keep their workflow digital and help ensure that reports, materials quantities, and other data remain up to date. Importantly, they can more efficiently count and quantify building components and their compositions.

Outer face of balustrade walls	m2
Outer face of balustrade walls circular to (not?) exceeding 1m radius	m2
Inner face of railing balustrade walls over stairs	m2
Outer face of railing balustrade walls	m2
Inner face of flowing balustrade walls over stairs circular to (not?) exceeding 1m radius	m2
Outer face of flowing balustrade walls circular to (not?) exceeding 1m radius	m2
Rectangular stub columns in foundations (Provisional)	m2
Rectangular columns in foundations (Provisional)	m2
Rectangular columns	m2

More details about the course are available at: [http://www.caddcentre.ws/building\\_estimation\\_costing.php](http://www.caddcentre.ws/building_estimation_costing.php)

Our course will cover all key features of Autodesk's Quantity Takeoff that are related to:

- ✦ Building estimation and costing from 2D AutoCAD drawings.
- ✦ Creation of synchronized, comprehensive project views that combine important information from building information modeling (BIM) tools such as Revit® Architecture, Revit® Structure, and Revit® MEP software together with geometry, images, and data from other tools.
- ✦ Automatic or manual measuring of areas and counting of building components, exporting to Microsoft® Excel®, and publishing to DWF™ format. Autodesk's Quantity Takeoff supports the takeoff of JPG, TIF, PDF, and other "nonintelligent" image formats.
- ✦ Latest Autodesk® technology in the areas of drawing, viewing, quantification, and markup capabilities, uniting design data and other vital information within an open and fluid architecture. So one can better keep track of changing variables without missing a beat.
- ✦ Generating material quantity takeoffs and performing conceptual estimates, regardless of what phase you are in during a project - from design through preconstruction.



The globalized economy has produced millions of people having similar educational backgrounds, and skill sets, making it difficult for students to differentiate by demonstrating their expertise.

In order to give students (and professionals) a chance to express their competence and genuine expertise, CADD Centre has recently launched Ccube, CADD Centre's online certification program that offers competency certification for students and working professionals in various software and specific software modules for engineers, graphic artists, designers and managers.

The link <http://www.ccube.asia> carries the complete list of products and software for which examinations are conducted. If you want to evaluate yourself on the knowledge level of a particular software or module and test your competency, you can go ahead and register with your nearest CADD Centre authorized testing centre.

#### What is a Competency Certification?

A competency certification from Ccube can serve as a key differentiator and help students get jobs. Coming from CADD Centre, Asia's largest engineering design skill development training centre with 25 years of track record, the certification naturally gets recognized by all industries across India and abroad.

## How Exams are Structured?



The examination is based on the "Multiple Choice Questions (MCQ)" format. You will need to choose the most appropriate answer from the list of options given. You will be tested on the particular software version or module in which you have decided to obtain certification.

You can undergo training in any of the CADD Centre's franchisee centres. When you enrol yourself in any course, you will receive the study materials. Passing Ccube's certification test would certainly require preparation and study of features of relevant software.

Exams are conducted on all days of the week except national holidays. There will be six sessions per day through from 9AM to 6PM. We use a modern and systematic grading system in order to evaluate the competency of the candidates with the highest grade being an "A" grade.

## CADD Centre Launches Competency Certification Programs to Boost Your Employability



Ccube is different from course completion certificates. A Ccube certificate demonstrates a student's industry readiness, high degree of specialization and deep expertise in the

chosen field. Apart from adding value to resume, the certification highlights the student's dedication to continuous skill development and gives him/her a head-start in the highly competitive job market.

Ccube certificates are a genuine testament to a student's expertise in a particular software or software module, as they are awarded only after an extensive assessment of his/her deep insight and industry readiness, the true hallmarks of competency. CADD Centre's Ccube specifications map to several specific job roles and employers would be confident that certified-students possess the right skills.

In order to register for an exam of your choice, log to our website or walk into any of the CADD Centre authorized C3certification centres. The details of our authorised centres can be found listed at <http://www.ccube.asia>. Alternatively, you can e-mail us at [contact@ccube.asia](mailto:contact@ccube.asia).