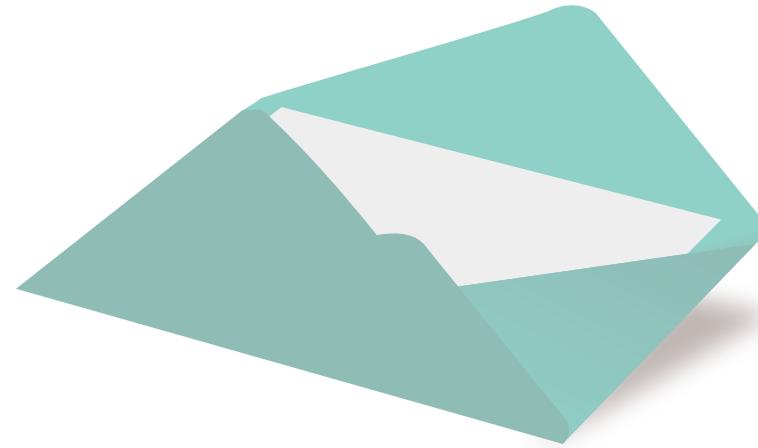


If undelivered, please return to:



1800 425 0405

DREAM. WIN SCHOLARSHIP. ACHIEVE.

INDIA'S LARGEST SCHOLARSHIP EXAM IS BACK!



CADD Quest is India's largest scholarship exam conducted by CADD Centre - Asia's largest network of training centres. It's a simple, online aptitude test. Your test score will determine your scholarship amount. And over 5 lakh students have launched their careers starting here.

UP TO **50%** Scholarships
₹ 25000 Cash Prize for test toppers*

Test Dates:
Kerala, Maharashtra: 13th, 14th & 20th, 21st Jan 2018
Gujarat: 20th, 21st & 27th, 28th Jan 2018



20 years of Scholarship
5 lakh students benefitted

Scan this QR code to register



* Conditions apply

Monthly Newsletter
CADDZOOM
Your CAD / CAM Highway

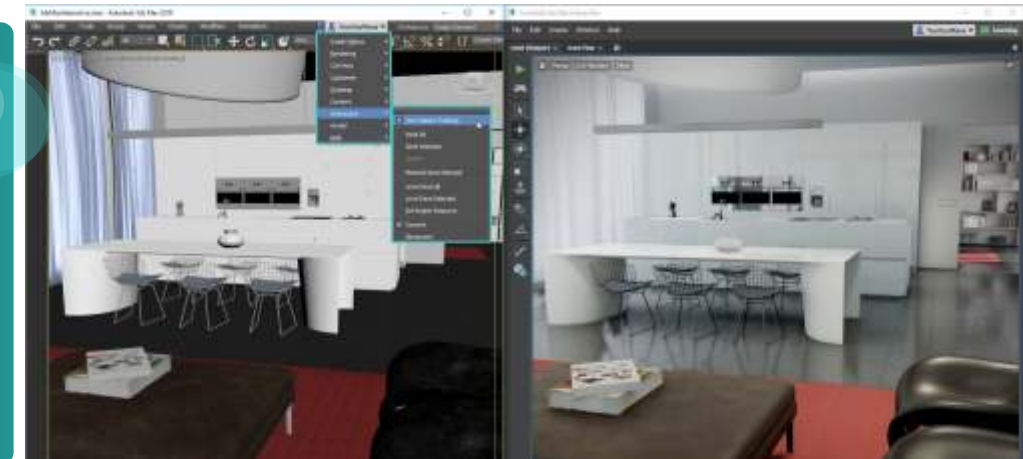


Scan and Read it Online



Celebrating **30** Glorious Years

What's New In 3DS MAX 2018



3ds Max 2018 brings several new features for creating visualizations. The 2018 version of the software replaces the metal ray by the Arnold renderer becoming the high-end global illumination render engine for creating 3D visualizations. The application now includes 3ds Max interactive, which is a real-time engine, based on the Autodesk Stingray. This new 3D to VR workflow is specially designed to provide the 3ds Max users a new way to create interactive and virtual reality (VR) experiences. The application has some amazing Modeling and Rendering features as described below:

3D Modeling

The PDF import features, as indicated by the design professionals will help them save a lot of money. The AutoCAD 2018 let you use the SHX text recognition tool to quickly convert the imported PDF geometry to text and Mtext objects. The improvised text and Mtext tools, in turn, lets you convert a combination of single and multi-line text objects into a single multi-line text object automatically predicting the formatting.

3D Rendering

The 3ds Max interactive offer access integrated tools to create VR visualizations without leaving your 3ds Max workspace. Some of its features include:

- The MAXtoA plug-in integrated into 3ds Max gives the designer's access to Arnold's latest features.
- The application can simulate real-life camera settings such as shutter speed, aperture, depth of field, exposure and some other options. The physical camera integrates framing the scene with exposure control and some other effects.
- The new controls include a Create Panel, Standard menu, and Enhanced menu. The camera feature lets the designers use photorealistic physically-based rendering techniques.

➤ The application also includes some improved active shade rendering. This feature gives the designers a preview rendering that helps the developers to see the effects of changing light or material in the designed scene.

This way the application gives the users more power and flexibility to create images and 3D models. The new 3ds Max also offers advanced user interface capabilities that enable users to access all the content in a single view. The application also has improvements in its pipeline tools integration. It helps designers create, share and update portable assets that are flexible, interconnected and responsive towards changes in the design data. You can run the new 3ds Max on modern HDPI monitors and laptops to get a better view of your designs.

Happy New Year **2018**

GROWING GLOWING PLANTS



Technology is yet to give a completely new definition to indoor plants. Now, along with lamps, researchers are able to make even the plants glow. Engineers from the MIT have taken a critical first step to turn such a vision into reality. This is done by embedding some specialized nanoparticles into the leaves of the watercress plants. These particles induce the plants to give off dim light for about four hours. These researchers believe that further optimization in this field will make the plants bright enough to illuminate an entire workspace.

To create the illuminated plants, the team:

- Selected luciferase, the enzyme that gives the fireflies their glow.
- Luciferase acts on a molecule called the Luciferin, making it illuminated.

- Another molecule, called co-enzyme A helps this process by removing a reaction by-product that can inhibit luciferase activity.

The MIT team combined these three components into a different type of nanoparticle. These nanoparticles were in turn used in the plants. These plants could easily emit light and glow for 45 minutes. With some further study, the team progressed in this research to extend the time up to 3.5 hours. The light generated by these plants currently is about one-thousandth of the amount required to read. The researchers still believe that they can boost the intensity as well as its duration.

For future advancements in this technology, the researching team is working to develop nanoparticles spray onto the plant leaves. This spray will make the leaves to emit light,

transforming the trees and other large plants into light sources. The team is also working on ways that can turn this light off by adding nanoparticles carrying a luciferase inhibitor. This way, the team could eventually create plants that shut off their light emission in response to the environmental conditions such as sunlight.



more conservative and realistic results through linear and nonlinear direct-integration time-history analysis. Here you can choose options for Viscous Proportional Damping and Additional Modal Damping.

Modelling

The new updates consist of new codes for shrinkage, creep, and stiffness aging. The models are New Zealand Standard 3101-2006, Australian Standard 3600-2009, Eurocode 2-2004, and GL 2000.

Result Display and Output

The result is displayed on slab cracked-width on Eurocode 2-2004.

Image courtesy: <https://www.toolfarm.com> || <https://autodesk.lithium.com> || <http://bismannnews.rvnews.com> || <https://10.wp.com/www.costafarms.com> || <https://static.wixstatic.com> || <https://thenypost.files.wordpress.com> ||

Italian Architect Designs Folding House that can be built in 6 hours



Wouldn't it be nice if building houses became quick and moving them from one place to another became possible? An architect from Italy has proposed a new housing model which is completely different from the traditional way of building houses. He suggests a model where the houses can be folded. The assembling time of this house is not more than six hours with just three people working on it. Doesn't that sound interesting?

M.A.Di Homes

Renato Vidal, an Italian architect and the founder of M.A.Di (Modulo Abitativo Dispiegabile) homes, assures of high quality and safe homes that can be built quickly and transported easily. M.A.Di homes are available in a few customizable models. All the models are equipped with the basic facilities such as toilets, furnished kitchen, and technical installations such as water and electrical systems.

Installation

The houses are built in modules to make the construction quick and simple. Multiple modules can be attached to build a huge house. The installation of the house does not depend on a concrete base. The house can be placed directly on any flat floor. However, for people

who want a permanent house, are advised to build M.A.Di houses on foundation stakes.

Eco-friendly Optimization

Furthermore, these houses also support the installment of solar panels, LED lightings, and gray water treatment systems. Moreover, the external walls carry the color of customer's choice. The walls basically come in wood veneers, which can be customized with natural fiber, aluminum, plaster, and much more.

Price

The smallest house M.A.Di home costs up to 30,000 USD and covers nearly 26 square meters. The maximum expansion possible is up to 84 square meters which can cost 75,000 USD on an average. The costs of the house, however, depends on the customization selected by the customers.



Get Hired! Engineering Hiring Managers Top Secrets Revealed

It is now easy to get noticed as a top engineering candidate. A recent survey has identified a few major evaluation techniques employed by the hiring managers to distinguish promising candidates.

First 15 Minutes



More than 54% of the managers shortlist the top candidates within the first 15 minutes of the interview.

Top 3 Hard Skills



- 80% managers look for analytical or critical thinking.
- 65% look for technical skills (system, computer, software).
- 59% seek troubleshooting skills.

Top 3 Soft Skills



- Teamwork is a very important soft skill which is preferred by almost 85% managers.
- 79% managers shortlist the candidates who possess good listening and comprehension skills.
- 79% managers prefer candidates who possess a sense of personal accountability.

Resume



- 67% prefer digital resume.
- 29% seek a traditional hard copy.
- 2% seek for a digital portfolio.
- 2% shortlist based on a LinkedIn profile

Interview Tips



- Clearly express the personal achievements and weaknesses.
- Boldly communicate the skills and their reason for befitting the job.
- Remain conscious about timely appearance, politeness, grooming conditions, and graciousness.
- Learn about the company.

Common Interview Mistakes



- Inappropriate usage of mobiles phones during the interview
- Arriving late for the interview
- Lack of enthusiasm and passion for the job and carrier
- Behaving weird, ignorant, or ungrateful.

ETABS 2016 16.2.0 Enhancements



This version of ETABS is stacked with stunning features for Analysis, Modelling, Result Display and Output.

Analysis

a) Creep & Shrinkage: This feature includes the rebar effect, which can help reduce axial shortening of walls and columns. The feature lets you choose two options for Longitudinal Rebar Ratio- From Design and User Specified Ratio and two for Vertical Rebar Ratio- From Design and User Specified Ratio.

b) Modal Damping: This feature provides